

# Long Beach Museum of Art

## FOR IMMEDIATE RELEASE

September 5, 2009

CONTACT: Megan Ellisor

(562) 439 -2119 x 226

[megane@lbma.org](mailto:megane@lbma.org)

IMAGES AVAILABLE

Margaret Lazzari - Stas Orlovski - Tom Knechtel - Joe Biel - Alison Foshee - Margaret Griffith  
Jay Stuckey - Kiel Johnson - Steve Galloway - Erika Lizée - Justin Davis - Holly Boruck - Terry  
Arena - Nguyen Ly - Brian Mallman - Jamie Sweetman - Carleton Christy - Yuval Pudik - Carol  
Goldmark - Lynn Hanson - Ira Korman - Fran Siegel - Liz Young - Mike Tracy - Billy Hix -  
Denice Bartels - Yunsun Lee - Jennifer Celio - Macha Suzuki - Michael Dee - Adonna Khare

### *Sweet Subversives: Contemporary California Drawings*

*Long Beach, CA* – The Long Beach Museum of Art is preparing a new exhibition titled *Sweet Subversives*, which will open October 16, 2009 on the first floor of the Museum's gallery pavilion. *Sweet Subversives* is a unique gathering of 31 drawings by Southern California artists who explore their personal vision of what a drawing means to them and how they achieve this vision. Many artists stretch themselves within the traditions of mark-making on paper. Although all artists begin their creative process with the seemingly simple concept of a drawing, each artwork is taken on a complex journey—the media becomes mixed, papers become installation, and how we think about drawing moves within the complexities of each artist's vision. Every artist in this exhibition represents the best of contemporary drawings and mixed media drawings in the greater Los Angeles area. Selected artists include Kiel Johnson, Tom Knechtel, Erika Lizée and Adonna Khare.

While each work in *Sweet Subversives* is unique, each piece reflects the artist's personal interest. The artists challenge themselves artistically and conceptually with line drawings on paper. Regardless of the media, these artist drawings in all forms are much more than sweetly subversive to the restrictive understanding of drawings, the work in fact broadly includes abstract concepts and ideas, implied narratives, mathematics and issues of identity and personal expression. This exhibition further explores the growing pluralism in contemporary art, especially as artists address drawing. The eclectic intellectual and practical functions of drawings are substantial. Regardless of the subject or materials these drawings reflect the idiosyncratic but widely fantastic art created in the LA area. *Sweet Subversives* will close February 14, 2010.

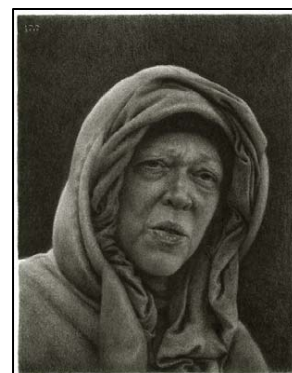
*Sweet Subversives* will be celebrated with a private opening reception for artists, sponsors, and press on October 22, 2009, followed by the return of the *LBMA After Dark*.

#### About the Long Beach Museum of Art

Located on a magnificent bluff overlooking the Pacific Ocean, the Long Beach Museum of Art features a historic mansion and carriage house, expansive galleries and gardens, oceanfront dining at Claire's at the Museum and a unique Museum Store. The galleries and store are open Tuesday – Sunday 11 a.m. to 5 p.m. Admission is \$7 for adults, \$6 for students and seniors age 62 and older, free for Museum members and children under 12, and free for everyone on Friday. Claire's at the Museum is open 11 a.m. to 3 p.m. Tuesday – Friday and 8 a.m. to 3 p.m. Saturday and Sunday. For more information, call (562) 439-2119 or visit [www.lbma.org](http://www.lbma.org).

#### Images (top to bottom)

Erika Lizée, *Together Our Intentions Grow Stronger*, 2008, graphite; Margaret Lazzari, *SCREAM*, 2004, conte crayon; Tom Knechtel, *Niño and Babette* (cropped), 1989, silver point; Ira Korman, *Old Mary*, 2008, Charcoal on paper.



###